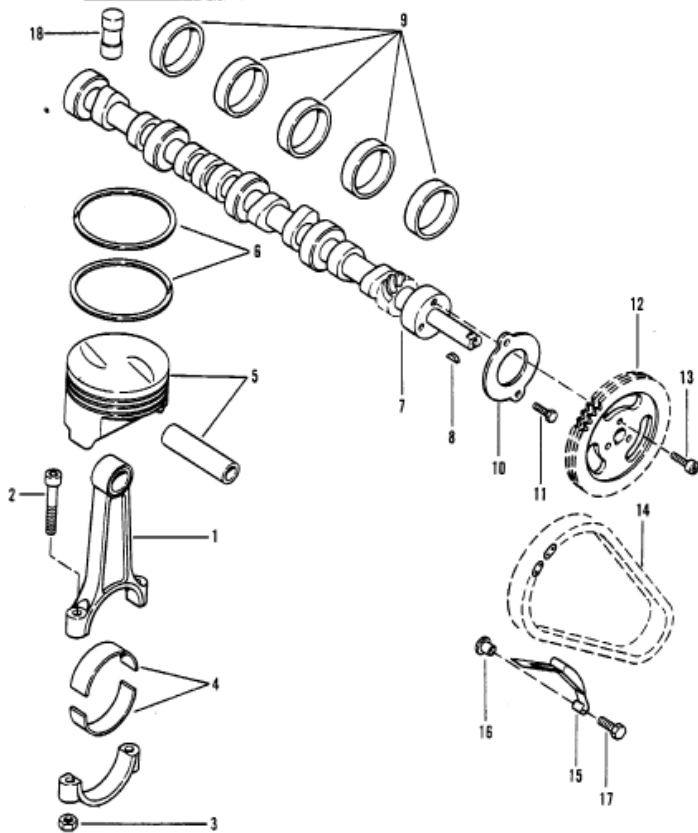
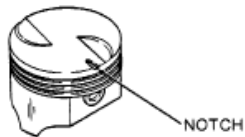


† = indicates piston with notch on top side, see illustration.



Parts List					
Ref	Class	Part	Description	Qty	Footnote
1	628	6100A 2	CONNECTING ROD ASSEMBLY	4	
2	10	75444	SCREW, CONNECTING ROD	8	
3	11	64769	NUT, CONNECTING ROD SCREW	8	
4		68704A 1	BEARING, CONNECTING ROD (S	4	
4		68704A 2	BEARING, CONNECTING ROD (.0	AR	
4		68704A 4	BEARING, CONNECTING ROD (.0	AR	
4		68704A 3	BEARING, CONNECTING ROD (.0	AR	
5	759	8312A 2	PISTON (STANDARD)	4	4
5	759	8312A 3	PISTON (.005 O.S.) - USE STAND	AR	4
5	759	8312 12	PISTON (.030 O.S.)	AR	4
5	778	9015A 2	PISTON (STANDARD)	4	9
5	778	9015A 3	PISTON (.005 O.S.) - USE STAND	AR	9
5	778	9015A 4	PISTON (.030 O.S.)	AR	9
6	39	74381A 1	RING, PISTON (STD.)	4	
6	39	75423	RING, PISTON (.030 O.S.)	AR	
7	466	8479A 1	CAMSHAFT	1	
8	28	86466	KEY, CAMSHAFT	1	
9	23	67484	BEARING, CAMSHAFT	5	WHEN ORDERING REPLACEME
10		67492	THRUST PLATE, CAMSHAFT	1	
11	10	49668	SCREW, THRUST PLATE (3/4")	2	
12		86461A 1	SPROCKET, CAMSHAFT	1	
13	10	70084	SCREW, SPROCKET TO CAMSH	3	
14		68717A 1	CHAIN, TIMING	1	
15		75202	TENSIONER, CHAIN	1	
16	23	75087	BUSHING, CHAIN TENSIONER	1	
17	10	75206	SCREW, TENSIONER (1-3/4")	1	
18		56153	TAPPET	8	